

NORTHERN



FABRICATORS



SHEET METAL CATALOG

40 Pixley Industrial Pkwy
Rochester, NY 14624

Tel: 585.426.0891

Direct Sales Fax: 585.429.9843
sales@northernfabricators.com

www.northernfabricators.com

Index

Contact Info.....	02
Spiral Pipe.....	03
Sheet Metal Fittings.....	04 -11
Miscellaneous Products.....	12
Gripple Hanging System.....	13 -17

Terms and Conditions

Prices are F.O.B. Rochester, New York. Prices do not include delivery or sales tax. Prices are subject to change without notice.

Payment arrangements of cash, bank approved check or credit card are to be established at order placement.

Payment terms are extended based upon completed and approved credit application and qualified payment terms have been established. Finance charges of 2% will be accessed on past due invoices. Additional fees incurred in collection of outstanding debts will be the responsibility of the debtor.

Any items damaged during shipment via Northern Fabricators trucking must be reported to Northern Fabricators within 24 hours of delivery. Items damaged during shipment will be replaced at no additional charge to the customer.

Requests for product returns must be approved in writing prior to return. An authorized Return Merchandise Number will be assigned. All items must be returned within 30 days of original date of purchase.

Northern Fabricators reserves the right to refuse any items that have:

1. Been altered from its' original condition at point of sale
2. Damaged by means other than shipping by Northern Fabricators
3. Deemed not in resale condition

A restocking charge of up to 25% may be applied to returned products. Customer is responsible to return product to the Northern Fabricators Warehouse. Any returned items that are picked up via Northern Fabricators will be subject to freight charges.

Northern Fabricators shall not be liable for any consequential, incidental or contingent damages whatsoever.

Northern Fabricators extends to the buyer the manufacturer's warranty for all stock items.

About Us

Northern Fabricators offers custom fabrication services for sheet metal and other products, located in Rochester, NY. Exceeding our customers' expectations is our number one goal.

All structural steel and sheet metal needs are handled by expert in-house fabricators and welders, using skilled labor from the Local 46 Sheet Metal Workers Union, providing superior quality. Customers can find a large selection of custom parts in a wide variety of gauge metal.

We specialize in custom welding, metal fabrication and one-of-a-kind designs. Please visit our website www.northernfabricators.com to see how we can assist you with your next sheet metal project.

Northern Fabricators is proud to be apart of the following associations:



Contact Us

Northern Fabricators is a leading manufacturer, distributor and manufacturer's representative of quality HVAC products. Our company has combined these three sources to offer the most comprehensive line of products in our market.

Please contact our experienced sales staff in your local sales office for product or application assistance.

40 Pixley Industrial Pkwy
Rochester, NY 14624

Tel: 585.426.0891

Direct Sales Fax: 585.429.9843
sales@northernfabricators.com

www.northernfabricators.com

We accept the following:



Products

- All gauges conform to SMACNA standards
- Quantity discounts available

Round Spiral Pipe

- Stock 3" -24" even sizes standard I Galvanized (26GA) 10' Lengths
- Custom sizes available up to 48"
- Available in Galvaneal, Aluminum, Stainless, PVS, Galvalurne
- Custom Oval Spiral Pipe Available - 6" x 22" up to 20" x 64"
- Contact sales for a quote

Standard Gauge Galvanized Spiral Pipe	
Item Number	Description
101903-GA	03" Spiral Pipe - 10' Length (26 Gauge)
101904-GA	04" Spiral Pipe - 10' Length (26 Gauge)
101905-GA	05" Spiral Pipe - 10' Length (26 Gauge)
101906-GA	06" Spiral Pipe - 10' Length (26 Gauge)
101907-GA	07" Spiral Pipe - 10' Length (26 Gauge)
101908-GA	08" Spiral Pipe - 10' Length (26 Gauge)
101909-GA	09" Spiral Pipe - 10' Length (26 Gauge)
101910-GA	10" Spiral Pipe - 10' Length (26 Gauge)
101912-GA	12" Spiral Pipe - 10' Length (26 Gauge)
101914-GA	14" Spiral Pipe - 10' Length (26 Gauge)
101916-GA	16" Spiral Pipe - 10' Length (26 Gauge)
101918-GA	18" Spiral Pipe - 10' Length (26 Gauge)
101920-GA	20" Spiral Pipe - 10' Length (26 Gauge)
101922-GA	22" Spiral Pipe - 10' Length (26 Gauge)
101924-GA	24" Spiral Pipe - 10' Length (26 Gauge)



Stock Spiral

Sheet Metal Fittings

Coupling (Small End / Small End)	
Item Number	Description
102004-GA	04" Galvanized Coupling
102005-GA	05" Galvanized Coupling
102006-GA	06" Galvanized Coupling
102007-GA	07" Galvanized Coupling
102008-GA	08" Galvanized Coupling
102009-GA	09" Galvanized Coupling
102010-GA	10" Galvanized Coupling
102012-GA	12" Galvanized Coupling
102014-GA	14" Galvanized Coupling
102016-GA	16" Galvanized Coupling
102018-GA	18" Galvanized Coupling
102020-GA	20" Galvanized Coupling
102022-GA	22" Galvanized Coupling
102024-GA	24" Galvanized Coupling



A-Collar	
Item Number	Description
102204	4" Tab Collar Crimped
102206	6" Tab Collar Crimped
102208	8" Tab Collar Crimped
102210	10" Tab Collar Crimped
102212	12" Tab Collar Crimped
102214	14" Tab Collar Crimped
102216	16" Tab Collar Crimped
102218	18" Tab Collar Crimped
102220	20" Tab Collar Crimped



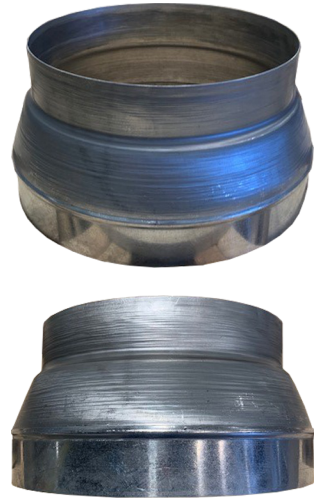
Round off Round Tap w/ Damper (ATDRP)	
Item Number	Description
101804	4" round off round tap (ATDRP)
101806	6" round off round tap (ATDRP)
101808	8" round off round tap (ATDRP)
101810	10" round off round tap (ATDRP)
101812	12" round off round tap (ATDRP)
101814	14" round off round tap (ATDRP)



Airtight Take Off w/ Damper (ATD)	
Item Number	Description
102304	4" Airtight Take Off
102306	6" Airtight Take Off
102308	8" Airtight Take Off
102310	10" Airtight Take Off
102312	12" Airtight Take Off
102314	14" Airtight Take Off
102316	16" Airtight Take Off
102318	18" Airtight Take Off
102320	20" Airtight Take Off



Spun Reducer	
Item Number	Description
10270604	06 x 04" Spun Reducer
10270804	08 x 04" Spun Reducer
10270806	08 x 06" Spun Reducer
10271006	10 x 06" Spun Reducer
10271008	10 x 08" Spun Reducer
10271208	12 x 08" Spun Reducer
10271210	12 x 10" Spun Reducer
10271410	14 x 10" Spun Reducer
10271412	14 x 12" Spun Reducer
10271612	16 x 12" Spun Reducer
10271614	16 x 14" Spun Reducer
10271814	18 x 14" Spun Reducer
10271816	18 x 16" Spun Reducer
10272018	20 x 18" Spun Reducer
10272216	22 x 16" Spun Reducer
10272218	22 x 18" Spun Reducer
10272220	22 x 20" Spun Reducer
10272420	24 x 20" Spun Reducer
10272422	24 x 22" Spun Reducer



3pc. Reducer	
Item Number	Description
10210403	04 x 03 Reducer (3pc)
10210604	06 x 04 Reducer (3pc)
10210804	08 x 04 Reducer (3pc)
10210806	08 x 06 Reducer (3pc)
10211006	10 x 06 Reducer (3pc)
10211008	10 x 08 Reducer (3pc)
10211206	12 x 06 Reducer (3pc)
10211208	12 x 08 Reducer (3pc)
10211210	12 x 10 Reducer (3pc)
10211408	14 x 08 Reducer (3pc)
10211410	14 x 10 Reducer (3pc)
10211412	14 x 12 Reducer (3pc)
10211610	16 x 10 Reducer (3pc)
10211612	16 x 12 Reducer (3pc)
10211614	16 x 14 Reducer (3pc)



Stamped 90 ° Elbow	
Item Number	Description
1010039024	03" 90° 1.5 Stamped Elbow-24 GA
1010049024	04" 90° 1.5 Stamped Elbow-24 GA
1010059024	05" 90° 1.5 Stamped Elbow-22 GA
1010069024	06" 90° 1.5 Stamped Elbow-22 GA
1010079024	07" 90° 1.5 Stamped Elbow-22 GA
1010089022	08" 90° 1.5 Stamped Elbow-22 GA
1010099022	09" 90° 1.5 Stamped Elbow-22 GA
1010109022	10" 90° 1.5 Stamped Elbow-22 GA
1010129022	12" 90° 1.5 Stamped Elbow-22 GA



Stamped 45 ° Elbow	
Item Number	Description
1010034524	03" 45° 1.5 Stamped Elbow-24 GA
1010044524	04" 45° 1.5 Stamped Elbow-24 GA
1010054524	05" 45° 1.5 Stamped Elbow-22 GA
1010064524	06" 45° 1.5 Stamped Elbow-22 GA
1010074524	07" 45° 1.5 Stamped Elbow-22 GA
1010084524	08" 45° 1.5 Stamped Elbow-22 GA
1010094524	09" 45° 1.5 Stamped Elbow-22 GA
1010104522	10" 45° 1.5 Stamped Elbow-22 GA
1010124522	12" 45° 1.5 Stamped Elbow-22 GA



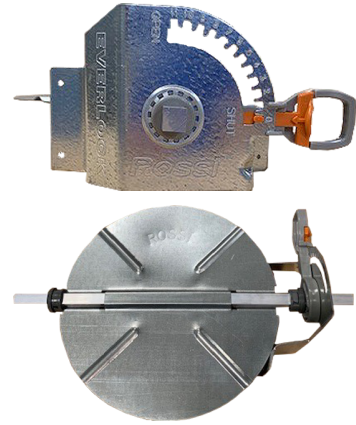
High Efficiency Take Off With Damper	
Item Number	Description
101204	04" High Efficiency Take Off With Damper
101206	06" High Efficiency Take Off With Damper
101208	08" High Efficiency Take Off With Damper
101210	10" High Efficiency Take Off With Damper
101212	12" High Efficiency Take Off With Damper
101214	14" High Efficiency Take Off With Damper
101216	16" High Efficiency Take Off With Damper
101218	18" High Efficiency Take Off With Damper



Heavy Duty High Efficiency Take Off with V.D.	
Item Number	Description
101204OS	04" Heavy Duty High Efficiency Take Off with V.D.
101206OS	06" Heavy Duty High Efficiency Take Off with V.D.
101208OS	08" Heavy Duty High Efficiency Take Off with V.D.
101210OS	10" Heavy Duty High Efficiency Take Off with V.D.
101212OS	12" Heavy Duty High Efficiency Take Off with V.D.
101214OS	14" Heavy Duty High Efficiency Take Off with V.D.
101216OS	16" Heavy Duty High Efficiency Take Off with V.D.
101218OS	18" Heavy Duty High Efficiency Take Off with V.D.



Volume Dampers	
Item Number	Description
101704	04" Volume Damper
101706	06" Volume Damper
101708	08" Volume Damper
101710	10" Volume Damper
101712	12" Volume Damper
101714	14" Volume Damper
101716	16" Volume Damper



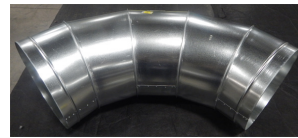
3pc. Reducer	
Item Number	Description
101104	04" Galvanized Stamped End Cap
101105	05" Galvanized Stamped End Cap
101106	06" Galvanized Stamped End Cap
101107	07" Galvanized Stamped End Cap
101108	08" Galvanized Stamped End Cap
101109	09" Galvanized Stamped End Cap
101110	10" Galvanized Stamped End Cap
101112	12" Galvanized Stamped End Cap
101114	14" Galvanized Stamped End Cap
101116	16" Galvanized Stamped End Cap
101118	18" Galvanized Stamped End Cap
101120	20" Galvanized Stamped End Cap
101122	22" Galvanized Stamped End Cap
101124	24" Galvanized Stamped End Cap



Gored 45° Elbows	
Item Number	Description
10141445-GA	14" 45° Gored Elbow
10141645-GA	16" 45° Gored Elbow
10141845-GA	18" 45° Gored Elbow
10142045-GA	20" 45° Gored Elbow
10142245-GA	22" 45° Gored Elbow
10142445-GA	24" 45° Gored Elbow



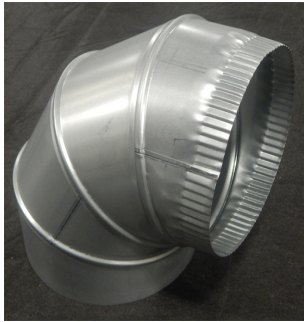
Gored 90° Elbows	
Item Number	Description
10141490-GA	14" 90° Gored Elbow
10141690-GA	16" 90° Gored Elbow
10141890-GA	18" 90° Gored Elbow
10142090-GA	20" 90° Gored Elbow
10142290-GA	22" 90° Gored Elbow
10142490-GA	24" 90° Gored Elbow



Sweep Taps With Volume Damper	
Item Number	Description
10150608VD	6" on 8" Sweep Tap with V.D.
10150610VD	6" on 10" Sweep Tap with V.D.
10150810VD	8" on 10" Sweep Tap with V.D.
10150812VD	8" on 12" Sweep Tap with V.D.
101501012VD	10" on 12" Sweep Tap with V.D.
101501014VD	10" on 14" Sweep Tap with V.D.
101501214VD	12" on 14" Sweep Tap with V.D.



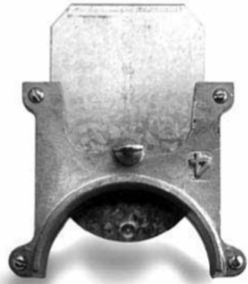
Adjustable Elbow	
Item Number	Description
101304	04" ADJ Elbow -26 GA
101306	06" ADJ Elbow -26 GA
101308	08" ADJ Elbow -26 GA
101310	10" ADJ Elbow -26 GA
101312	12" ADJ Elbow -26 GA
101314	14" ADJ Elbow -26 GA
101316	16" ADJ Elbow -26 GA
101318	18" ADJ Elbow -26 GA
101320	20" ADJ Elbow -26 GA



Full Blast Gate	
Item Number	Description
30800103	03" Full Blast Gate (Cut off)
30800104	04" Full Blast Gate (Cut off)
30800105	05" Full Blast Gate (Cut off)
30800106	06" Full Blast Gate (Cut off)
30800107	07" Full Blast Gate (Cut off)
30800108	08" Full Blast Gate (Cut off)
30800109	09" Full Blast Gate (Cut off)
30800110	10" Full Blast Gate (Cut off)
30800112	12" Full Blast Gate (Cut off)



Half Blast Gate	
Item Number	Description
30800204	04" Half Blast Gate (Cut off)
30800206	06" Half Blast Gate (Cut off)
30800208	08" Half Blast Gate (Cut off)
30800210	10" Half Blast Gate (Cut off)
30800212	12" Half Blast Gate (Cut off)



Special Order

Miscellaneous Products

Duct Sealer Gallon	
Item Number	Description
105036	Sold per 1 gallon/ 4 per case



Self Tapping Screw	
Item Number	Description
30401016341	5/16 x 3/4" #10 Zinc



Duct Sealer Tubes	
Item Number	Description
1050401	11 oz. tubes



G GRIPPLE®



Features & Benefits

- Grippple hangers are the versatile way to suspend static loads.
- Their time saving qualities have been shown to reduce installation by up to 6 times compared to threaded rod, chain, hanger strap, or other loose cable systems.
- Grippple hangers incorporate a length of pre-cut cable with a pre-fabricated end fixing for maximum speed, efficiency and safety.
- Their lightness is a major safety improvement, both in terms of carrying and storing the product easily on site and in reducing accident risk in aerial situations caused by falling materials.
- Grippple hangers are far less invasive than threaded rod and in fact enhance the aesthetics of installations.
- They allow the installer to position the hangers vertically or at an angle to the suspended object.
- Grippple hangers are available in numerous configurations for attachment to virtually any type of building structure.
- Grippple hangers are manufactured to ISO 9002 standards and carry certificates from the following agencies: UL, SMACNA and ETL Intertek.

Gripple Hangers are available in five load rated sizes designed to carry a specific weight range (Reference chart on next page)

Gripple Hanger Single Wall Spiral Pipe Quick Reference Guide






Please Note: Calculations are based on 1 Gripple Hanger per 10' section of pipe and do NOT take into account weight of connectors.

Pipe Diameter	SMACNA Std. Weight / 10 ft.	Pipe Circumference	Gripple Size and Spiral Pipe Gauge			
			26 GA.	24 GA.	22 GA.	20GA.
4	11 lbs.	1'.1"	2	2	2	2
5	14 lbs.	1'.3"	2	2	2	2
6	16 lbs.	1'.6"	2	2	2	2
7	19 lbs.	1'.9"	2	2	2	2
8	21 lbs.	2'.1"	2	2	2	2
9	24 lbs.	2'.4"	2	2	2	2
10	26 lbs.	2'.6"	2	2	2	2
11	29 lbs.	2'.9"	2	2	2	2
12	32 lbs.	3'.2"	2	2	2	2
13	34 lbs.	3'.4"	2	2	2	2
14	37 lbs.	3'.7"	2	2	2	2
15	41 lbs.	4'.0"	2	2	2	2
16	46 lbs.	4'.2"	2	2	2	2
17	58 lbs.	4'.5"	26 GA.	2	2	2
18	61 lbs.	4'.7"		2	2	2
20	68 lbs.	5'.3"		2	2	2
22	75 lbs.	5'.8"		2	2	3
24	82 lbs.	6'.3"		2	2	3
26	108 lbs.	6'.8"		3	3	3
28	116 lbs.	7'.4"		3	3	3
30	124 lbs.	7'.9"		3	3	3
32	133 lbs.	8'.4"		3	3	3
34	144 lbs.	8'.9"		3	3	3
36	149 lbs.	9'.5"	3	3	3	
38	185 lbs.	10'.0"	20 GA.			3
40	195 lbs.	10'.6"				3

How to use the quick reference guide:

1. Choose required diameter
2. Choose required spiral pipe gauge
3. Guide will show correct Gripple size (e.g. 12" Pipe, 26 gauge = No. 2 Gripple Hanger)

Gripple Hanger Kits Offered

Size	Cable Length	Loop	Toggle	1/4" Stud	3/8" Stud	90° Stud Eyelet
						
No. 1 0-22 lbs.	5 ft	X		X		
	10 ft	X		X		
	15 ft	X		X		
	30 ft	X		X		
No. 2 23-100 lbs.	5 ft	X	X	X		X
	10 ft	X	X	X		X
	15 ft	X	X	X		X
	30 ft	X	X	X		X
No. 2 Stainless Steel 23-100 lbs.	5 ft	X		X		
	10 ft	X		X		
	15 ft	X		X		
	30 ft	X		X		
No. 3 101-200 lbs.	5 ft	X	X	X	X	X
	10 ft	X	X	X	X	X
	15 ft	X	X	X	X	X
	30 ft	X	X	X	X	X
No. 3 Stainless Steel 23-100 lbs.	5 ft	X		X		
	10 ft	X		X		
	15 ft	X		X		
	30 ft	X		X		
No. 4 201-495 lbs.	5 ft	X			X	
	10 ft	X			X	
	15 ft	X			X	
	30 ft	X			X	
No. 5 496-715 lbs.	5 ft	X				
	10 ft	X				
	15 ft	X				
	30 ft	X				

ALL PRODUCTS CARRY A MINIMUM 5:1 SAFETY FACTOR

Gripple Loop End	
Item Number	Description
3048020105	#1 05 ft 22 lbs Loop End
3048020110	#1 10 ft 22 lbs Loop End
3048020115	#1 15 ft 22 lbs Loop End
3048020130	#1 30 ft 22 lbs Loop End
3048020205	#2 05 ft 100 lbs Loop End
3048020210	#2 10 ft 100 lbs Loop End
3048020215	#2 15 ft 100 lbs Loop End
3048020230	#2 30 ft 100 lbs Loop End
3048020305	#3 05 ft 200 lbs Loop End
3048020310	#3 10 ft 200 lbs Loop End
3048020315	#3 15 ft 200 lbs Loop End
3048020330	#3 30 ft 200 lbs Loop End



1/4" Gripple Stud End Hangers	
Each package includes 1/4" drop in anchor for punching into concrete	
Item Number	Description
3048030105	#1 05 ft 22 lbs Stud End
3048030110	#1 10 ft 22 lbs Stud End
3048030115	#1 15 ft 22 lbs Stud End
3048030130	#1 30 ft 22 lbs Stud End
3048030205	#2 05 ft 100 lbs Stud End
3048030210	#2 10 ft 100 lbs Stud End
3048030215	#2 15 ft 100 lbs Stud End
3048030230	#2 30 ft 100 lbs Stud End



Gripple Toggle End Hangers	
Item Number	Description
3048040105	#1 05 ft 22 lbs Toggle End
3048040110	#1 10 ft 22 lbs Toggle End
3048040115	#1 15 ft 22 lbs Toggle End
3048040130	#1 30 ft 22 lbs Toggle End
3048040205	#2 05 ft 100 lbs Toggle End
3048040210	#2 10 ft 100 lbs Toggle End
3048040215	#2 15 ft 100 lbs Toggle End
3048040230	#2 30 ft 100 lbs Toggle End



90 ° Eyelet Hangers	
Each package includes tapcon screw for concrete ceiling installation	
Item Number	Description
3048060105	#1 05 ft 22 lbs 90° Eyelet End
3048060110	#1 10 ft 22 lbs 90° Eyelet End
3048060115	#1 15 ft 22 lbs 90° Eyelet End
3048060130	#1 30 ft 22 lbs 90° Eyelet End
3048060205	#2 05 ft 100 lbs 90° Eyelet End
3048060210	#2 10 ft 100 lbs 90° Eyelet End
3048060215	#2 15 ft 100 lbs 90° Eyelet End
3048060230	#2 30 ft 100 lbs 90° Eyelet End



NORTHERN



FABRICATORS

40 Pixley Industrial Pkwy
Rochester, NY 14624

Tel: 585.426.0891

Direct Sales Fax: 585.429.9843
sales@northernfabricators.com

www.northernfabricators.com

