



## Product Line Card

---

### About Us

Northern Fabricators offers custom fabrication services for sheet metal and other products, located in Rochester, NY. Exceeding our customers' expectations is our number one goal.

All structural steel and sheet metal needs are handled by expert in-house fabricators and welders, using skilled labor from the Local 46 Sheet Metal Workers Union, providing superior quality.

Customers can find a large selection of custom parts ranging from 6 to 26 gauge metal. We specialize in custom welding, metal fabrication and one-of-a-kind designs. Please visit our website [www.northernfabricators.com](http://www.northernfabricators.com) to see how we can assist you with your next sheet metal project.



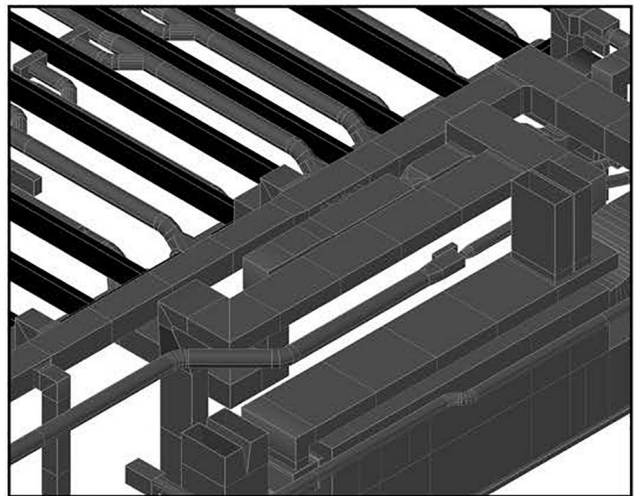
---

### Stock Items

- Spiral Pipe
- Couplings
- A-Collars
- End Caps
- 3 pc. Reducer
- High Efficiency Take Off
- Stamped Elbow - go0 & 45°
- Full & Half Blast Gate (Special Order)
- Adjustable Elbows
- Angle Rings (Special Order)
- Gored Elbows - go0 & 45°
- Rossi Volume Dampers
- Gripple
- Hanger Strap
- Duct Seal
- Self Tapping Screw
- Sweep Taps w/VD
- Spun Reducers
- ATD (round on flat w/ VD)
- ATDRP's (round on round w/VD)

### Other Items

- Custom Fabrication
- Shop Drawings
- Oval Duct
- Equipment Rails
- Roof Curbs





40 Pixley Industrial Pkwy  
 Rochester, NY 14624  
 web: [www.northernfabricators.com](http://www.northernfabricators.com)  
 phone: 585.426.0891  
 fax: 585.429.9843  
 sales: [sales@northernfabricators.com](mailto:sales@northernfabricators.com)

**GAUGE & WEIGHT CHART**

GAUGE	SHEET STEEL		GALVANIZED STEEL		STAINLESS STEEL		ALUMNUM	
	Gauge Decimal	Lbs per Sq. Ft	Gauge Decimal	Lbs per Sq. Ft	Gauge Decimal	Lbs per Sq. ft	Guage Decimal	Lbs per Sq. Ft
30	0.0120	0.500	0.016	0.656			0.0100	0.141
29	0.0135	0.563	0.017	0.719			0.0113	0.160
28	0.0149	0.625	0.019	0.781			0.0126	0.178
27	0.0164	0.688	0.020	0.844			0.0142	0.200
26	0.0179	0.750	0.022	0.906	0.018	0.756	0.0159	0.224
25	0.0209	0.875	0.025	1.031			0.0179	0.253
24	0.0239	1.000	0.028	1.156	0.024	1.008	0.0201	0.284
23	0.0269	1.125	0.031	1.281			0.0226	0.319
22	0.0299	1.250	0.034	1.406	0.03	1.26	0.0253	0.357
21	0.0329	1,375	0.037	1.531			0.0285	0.402
20	0.0359	1.500	0.040	1.656	0.036	1.512	0.0320	0.452
19	0.0418	1.750	0.046	1.906			0.359	0.507
18	0.0478	2.000	0.052	2.156	0.048	2.016	0.0403	0.569
17	0.0538	2.250	0.058	2.406			0.0453	0.639
16	0.0598	2.500	0.064	2.656	0.06	2.52	0.0508	0.717
15	0.0673	2.813	0.071	2.969			0.0571	0.806
14	0.0747	3.125	0.079	3.281	0.075	3.15	0.0641	0.905
13	0.0897	3.750	0.093	3.906			0.0720	1.016
12	0.1046	4.375	0.108	4.531	0.105	4.41	0.8080	1.140
11	0.1196	5.000	0.123	5.156	0;12	5.04	0.0907	1.280
10	0.1345	5.625	0.138	5.781	0.135	5.67	0.1019	1.438
9	0.1495	6.250	0.153	6.406			0.1144	1.614
8	0.1644	6.875	0.168	7.031	0.165	6.93	0.1285	1.813
7	0.1793	7.500			0.1874	7.871	0.1443	2.036
6	0.1943	8.125					0.1620	2.286
5	0.2092	8.750						
4	0.2242	9.375						
3	0.2391	10.00						